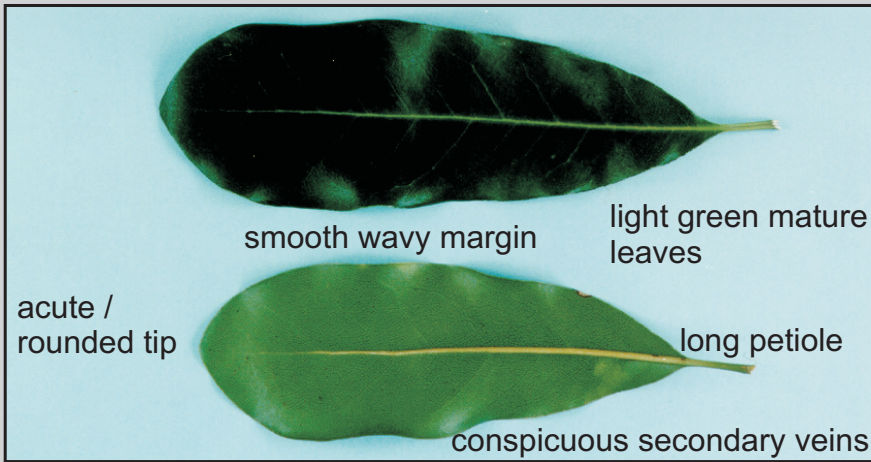
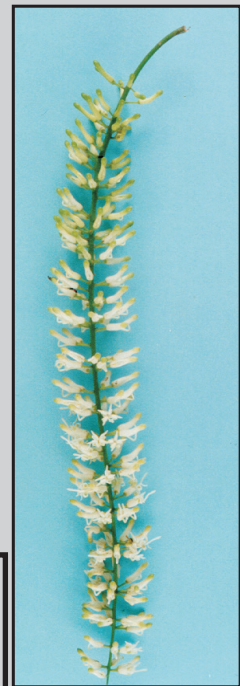


816

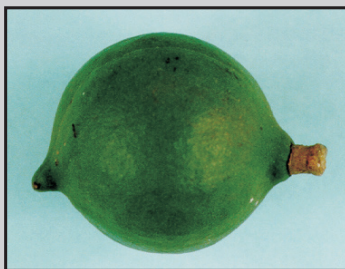
M. integrifolia selection ex Hawaii



thick infructescence

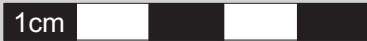


long inflorescence

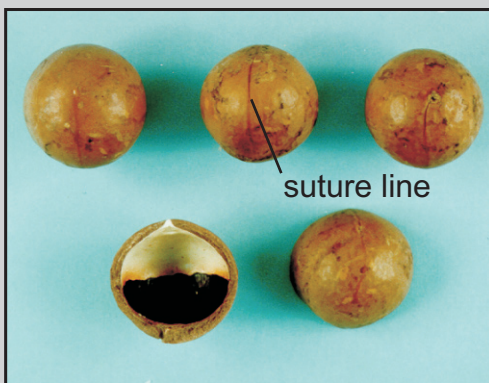
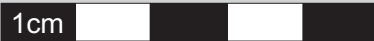


neck present
medium sharp apical point
slightly offset to medium stalk

KERNEL QUALITY
Av kernel mass: 2.4 - 2.8 g
Av kernel %: 34.5 - 39.7%
% No.1 kernel: 79.7 - 87.8%
Whole kernel: 42 - 69%



excellent kernel appearance



suture line

round smooth nuts
specks present



upright open growth habit

816

Allan & Nixon

